

CASUAL COTTON

for women & men

Compression Level

15-20mmHg

Features and Benefits

- » Made with premium Supima Cotton for optimum softness and durability
- » Flat, low-friction toe seam to prevent irritation
- » Soft, stretchable knit-in band prevents pinching

Fiber Content

- » 66% Supima Cotton, 26% Nylon, 8% Spandex
- » Non-latex

Best Suited for

- » Tired, heavy, restless, aching legs
- » Travelers, occupational leg health risks, expecting mothers, family history of chronic vein disease



SUPIMA®
WORLD'S FINEST COTTONS

Sizing Chart				
146	Women's Shoe	5-7	7.5-9.5	10-12
	Ankle Circumference	7"-9" (18-23cm)	7.5"-10" (19-25cm)	8"-10.5" (20-27cm)
186	Men's Shoe	6.5-8.5	9-11	11.5-14
	Ankle Circumference	7.5"-10" (19-25cm)	8"-10.5" (20-27cm)	8.5"-11.5" (21-29cm)
Size		A	B	C

Style and Colors					
Closed Toe = ●					
<div><div>WHITE00</div><div>NAVY10</div><div>BROWN11</div><div>KHAKI30</div><div>BLACK99</div></div>					
Calf (C)	●	●	●	●	●

Product Code Example: 146CB10			
Series	Style	Size	Color
146	C	B	10



15-20mmHg
Closed Toe Calf Size B in Khaki

146CB30



15-20mmHg
Closed Toe Calf Size C in Black

186CC99

SHEER FASHION *for women*

Compression Level

15-20mmHg

Features and Benefits

- » Fabric feels soft against the skin
- » Incredible sheer design in a variety of fashionable colors
- » Sheer toe and heel area
- » Comfortable stretch is excellent for everyday wear
- » Cotton-lined gusset on pantyhose styles

Fiber Content

- » 79% Nylon, 21% Spandex
- » Content can vary slightly by style
- » Non-latex

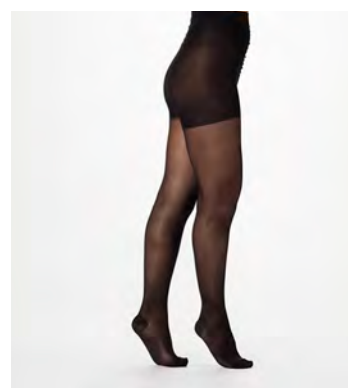
Best Suited for

- » Tired, heavy, restless, aching legs
- » Travelers, occupational leg health risks, expecting mothers, family history of chronic vein disease



15-20mmHg
Closed Toe Calf Size B in Mulberry

120CB60



15-20mmHg
Closed Toe Pantyhose Size C in Black

120PC99

Pantyhose and Maternity Sizing Chart

Ft/Cm	Lbs/Kg	100 / 45	105 / 48	110 / 50	115 / 52	120 / 54	125 / 57	130 / 59	135 / 61	140 / 64	145 / 66	150 / 68	155 / 70	160 / 73	165 / 75	170 / 77	175 / 80	180 / 82	185 / 84	190 / 86	195 / 89	200 / 91	205 / 93	210 / 95	215 / 98	220 / 100	225 / 102	230 / 105
4'9" / 145cm																												
4'10" / 147cm																												
4'11" / 150cm																												
5'0" / 152cm																												
5'1" / 155cm																												
5'2" / 157cm																												
5'3" / 160cm																												
5'4" / 162cm																												
5'5" / 165cm																												
5'6" / 167cm																												
5'7" / 170cm																												
5'8" / 173cm																												
5'9" / 175cm																												
5'10" / 178cm																												
5'11" / 180cm																												
6' / 183cm																												

Note: please use pre-pregnancy weight for maternity pantyhose. * Maternity pantyhose not available in size F.

Calf / Thigh Sizing Chart

120	Women's Shoe	5-7	7.5-9.5	10-12
	Ankle Circumference	7.5"-9" (19-23cm)	8"-10" (20.5-25cm)	8.5"-10.5" (22-27cm)
	Size	A	B	C

Weight Guidelines For Thigh Style: Size A: <135Lbs., Size B: <180Lbs., Size C: <230Lbs.

Styles and Colors

Closed Toe = ● Open Toe = ○	CHARCOAL 12	TAUPE 29	NATURAL 33	SUNTAN 36	MULBERRY 60	CAFÉ 73	BLACK 99
Calf (C)	●	●●	●●	●●	●	●	●
Thigh (N)	●	●	●	●		●	●
Pantyhose (P)	●	●	●	●		●	●
Maternity Pantyhose (M)			●				●

Product Code Example: 120PE73

Series	Style	Size	Color
120	P	E	73

Product Code Example: 120CCO36

Series	Style	Size	Open Toe	Color
120	C	C	O	36

SOFT SILHOUETTE LEGGINGS

for women

Compression Level

15-20mmHg

Features and Benefits

- » Stylish, subtle ribbed design looks chic and pairs perfectly with dresses, blouses, tunics, and shirts
- » Foldable, comfort-stretch waist band provides a seamless look for all-day wearing comfort
- » Advanced soft stretch microfiber fabric shapes legs and smooths skin

Fiber Content

- » 83% Nylon, 17% Spandex
- » Non-latex

Best Suited for

- » Tired, heavy, restless, aching legs,
- » Occupational leg health risks, family history of chronic vein disease



Sizing Chart

Ft	Lbs	100	105	110	115	120	125	130	135	140	145	150	155	160	165	170	175	180	185	190	195	200	205	210	215	220	225	230
4'10"																												
4'11"																												
5'0"																												
5'1"																												
5'2"																												
5'3"																												
5'4"																												
5'5"																												
5'6"																												
5'7"																												
5'8"																												
5'9"																												
5'10"																												
5'11"																												
6'																												

Guidelines for Ankle Circumference
Size A: 7"–9", Size B & C: 8"–10", Size D: 8.5"–11.5"

Style and Colors

Open Foot = ●

BLACK 99

Leggings (L)

●

Product Code Example: 170LB99			
Series	Style	Size	Color
170	L	B	99



15-20mmHg
Legging Size B in Black

170LB99



Non-binding ankle cuff
stays comfortably in place
for all day wear

BUSINESS CASUAL

for men

Compression Level

15-20mmHg

Features and Benefits

- » Stretchable toe fabric and heel design increase comfort and durability
- » Classic ribbed look for everyday wear
- » Wide, non-binding top band for comfortable fit
- » Soft, microfiber inlay yarns

Fiber Content

- » 88% Nylon, 12% Spandex
- » Non-latex

Best Suited for

- » Tired, heavy, restless, aching legs,
- » Travelers, occupational leg health risks, family history of chronic vein disease



Sizing Chart				
189	Men's Shoe	6.5–8.5	9–11	11.5–14
	Ankle Circumference	7.5"–10" (19–25cm)	8"–10.5" (20–27cm)	8.5"–11.5" (21–29cm)
	Size	A	B	C

Style and Colors				
Closed Toe = ●		<div>NAVY 10</div>	<div>BROWN 11</div>	<div>CHARCOAL 12</div>
Calf (C)		●	●	●

Product Code Example: 189CB12

Series	Style	Size	Color
189	C	B	12



15–20mmHg
Closed Toe Calf Size B in Charcoal

189CB12



15–20mmHg
Closed Toe Calf Size C in Brown

189CC11